

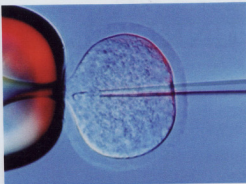
INTRACYTOPLASMIC MORPHOLOGY SELECTED SPERM INJECTION (IMSI) is an advanced technique for ICSI.

It has been estimated that approximately 40% of sterility in couples can be attributed to male sub fertility. Intracytoplasmic sperm injection (ICSI) has become a powerful means of overcoming male infertility in patients. A sophisticated advancement to ICSI is IMSI, intracytoplasmic morphologically selected sperm injection. Prior to sperm injection the morphology of the sperm cell is evaluated with high magnification DIC microscopy. Preceding studies have already demonstrated the advantage of IMSI over the conventional IVF-ICSI procedure in terms of the pregnancy rate.

Lilavati Hospital has installed a new microscope machine on 14 November 2008 that allows Infertility specialists, Dr Hrishikesh Pai and Dr Nandita Palshetkar choose good sperms over bad ones. The Microscope machine magnifies the image of the sperm 7, 200 times larger thereby helping pick better sperms as against the earlier technique of ICSI that has a magnification capacity of 200 times.

The technique called Intracytoplasmic Morphologically Selected Sperm Injection (IMSI) thus ensures a better success rate for IVF than the earlier technique (Intracytoplasmic Sperm Injection (ICSI))

Couples unable to conceive naturally resort to IVF and selection of good sperms is an important part of IVF. In most cases the doctors take the husband's sperm to coagulate with the wife's egg. But there are cases where the sperm count is low or the patient has a large



number of abnormal or immobile sperms. In such cases, Doctors use a medical microscope attached to the computer, to pick better sperms. Considering the high costs of IVF (Rs 80000- 1,00,000) couples who want to avoid failure, opt for IMSI which the Doctors claim have a much better success rate.

"This is great news for infertile couples. IVF consultants are now better equipped to produce better results for their patients. Though the machine is introduced for the first time in India, in Lilavati Hospital Mumbai, Dr Hrishikesh Pai and Dr Nandita Palshetkar will not charge any extras to the patient availing of this benefit.

What is ICSI?

The procedure of ICSI involves the technique where an egg is held and injected with a single live sperm with the help of a machine called micromanipulator. The fertilization occurs outside the body of the mother. The baby is created outside the body of the mother After a period of two days, the embryo is placed inside the mother's womb and a

blood test done 14 days later confirms the pregnancy.

For the preparation of the couple, the woman is given hormonal injections for 10-12 days so that she can produce 10-12 eggs. These eggs are then retrieved from the body by a small procedure called ovum pick up which is minimally invasive. The sperms are obtained from the husband. If the husband has zero sperms, then the sperms are retrieved by doing a testicular biopsy. It takes 15-20 minutes under Anesthesia, and the patient is able to go home two hours later.

What is IMSI?

Intracytoplasmic Morphologically Selected Sperm injection (IMSI) is a modified form of the ICSI (Intracytoplasmic Sperm Injection) technique. However the only difference is that IMSI carefully selects the best quality sperm by magnifying it many times more than the conventional ICSI method. Patients with severe low sperm count or abnormal and immobile sperms can largely benefit from IMSI.

VOL. IV No. 028

4 - Vrkashel City Reporter Mumbai, Saturday, November 29, 2008

SATURDAY, NOVEMBER 29, 2008 FOR THE WEEK NOVEMBER 23 - NOVEMBER 29

Your health

MUMBAI

Vrkashel City Reporter specializes to witness, create change. We see it, we film it, we change it.

- Editor

E-mail: cityreporter4@gmail.com

Mob: 9869961110

Vrkashel
City Reporter
A Voice for the Voiceless



Foreign guests react after being rescued from the Taj Hotel in Mumbai on November 27.